



ACHIEVE HOMES

REAL HOMES FOR REAL PEOPLE.

York - 27



4



2



2

**4 BEDROOM
SINGLE STOREY**

DESIGN DIMENSIONS

LIVING: 188.9 m²

GARAGE: 37 m²

ALFRESCO: 20.6 m²

PORCH: 4.2 m²

TOTAL: 250.7 m² - 27 SQ

WIDTH: 14.52 m **LENGTH:** 23 m

MINIMUM LAND SIZE

ACT:

WIDTH: 16m **LENGTH:** 30m

NSW:

WIDTH: 16m **LENGTH:** 30m

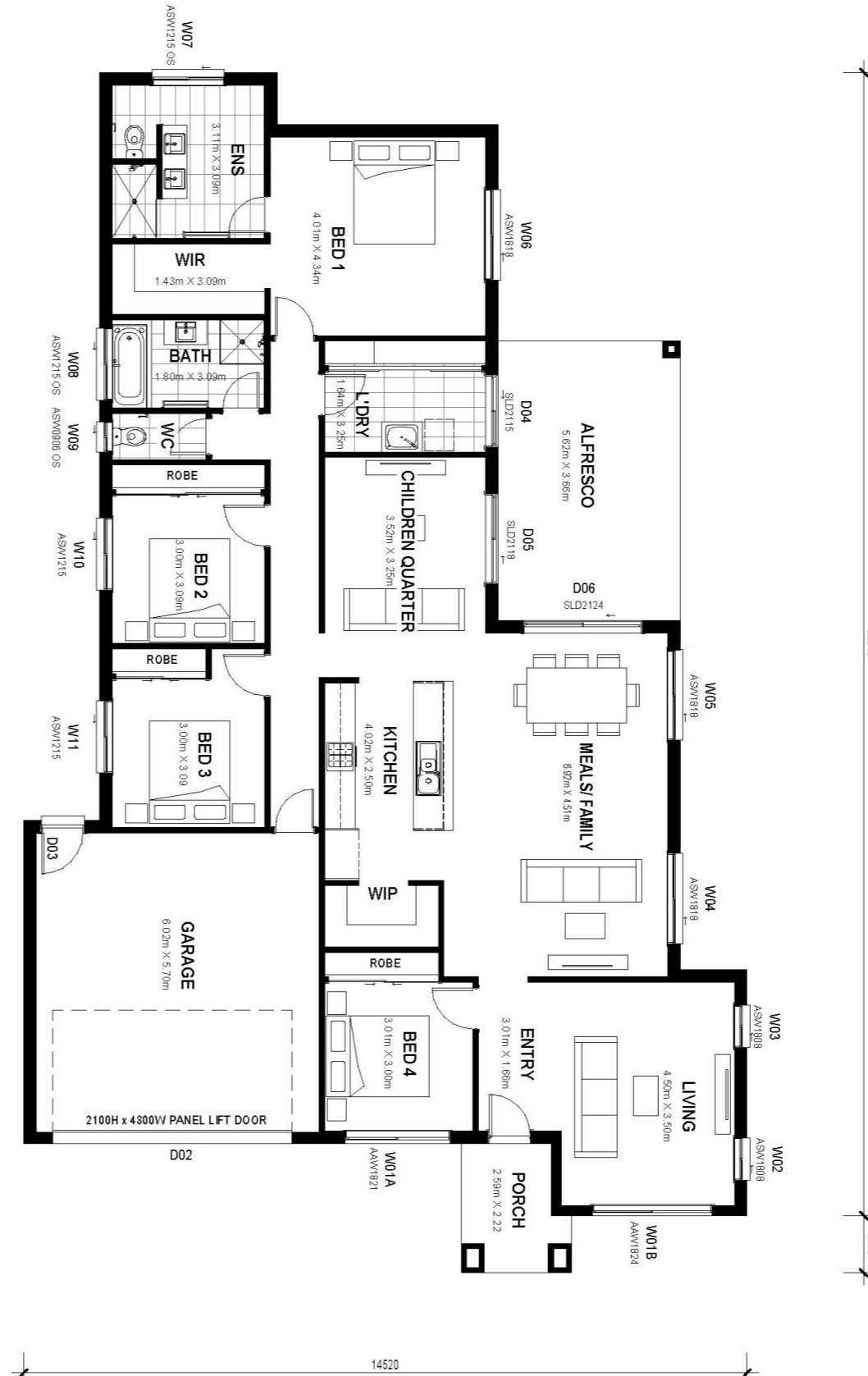
VIC:

WIDTH: 16m **LENGTH:** 30m

**VIEW THIS
DESIGN ONLINE**



SCAN ME



Disclaimer: Design dimensions on this marketing plan are for marketing purposes. Dimensions are indicative, approximate and subject to change once confirmed by Achieve Homes Design team.