



ACHIEVE HOMES

REAL HOMES FOR REAL PEOPLE.



4



3



2

Dominica - 26 SLH

4 BEDROOM
DOUBLE STOREY

DESIGN DIMENSIONS

LIVING: 190 m²

GARAGE: 35 m²

ALFRESCO: 9 m²

PORCH: 6 m²

TOTAL: 240 m² - 25.83 SQ

WIDTH: 8.87 LENGTH: 18.6

MINIMUM LAND SIZE

ACT:

WIDTH: N/A LENGTH: N/A

NSW:

WIDTH: 12.5m LENGTH: 28m

VIC:

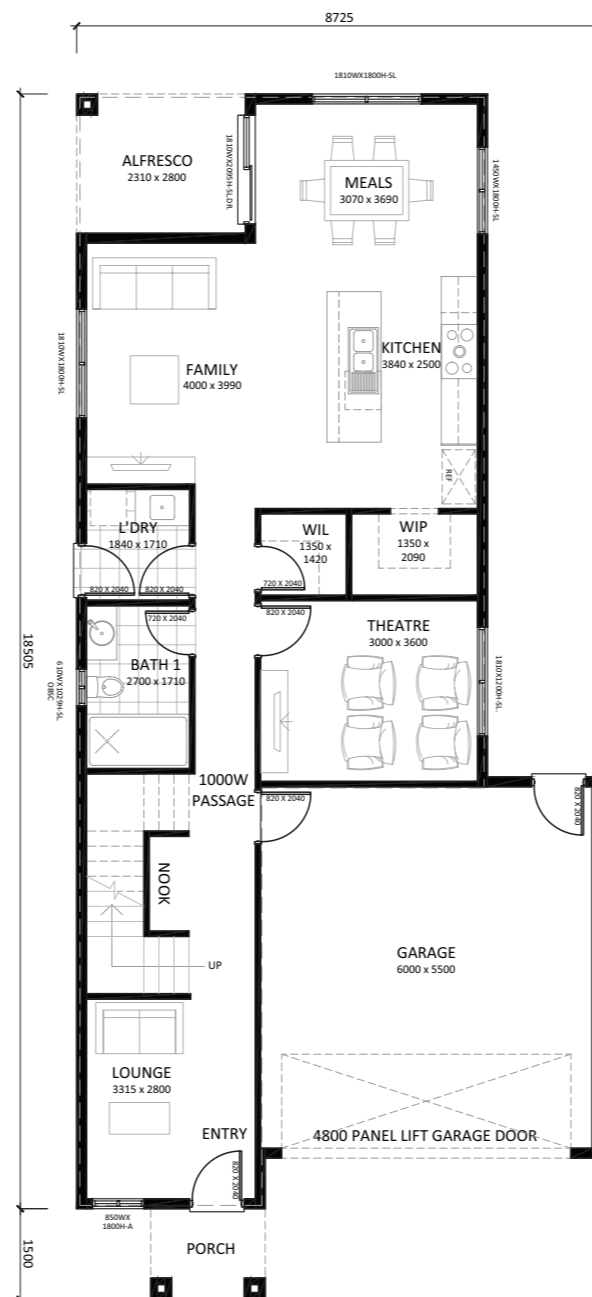
WIDTH: 10.5m LENGTH: 28m

VIEW THIS
DESIGN ONLINE



SCAN ME

LOWER PLAN



UPPER PLAN



Disclaimer: Design dimensions on this marketing plan are for marketing purposes. Dimensions are indicative, approximate and subject to change once confirmed by Achieve Homes Design team.