



ACHIEVE HOMES

REAL HOMES FOR REAL PEOPLE.

Bordeaux - 50



5



3



2

**5 BEDROOM
DOUBLE STOREY**

**DESIGN
DIMENSIONS**

LIVING: 390 m²

GARAGE: 40 m²

ALFRESCO: 21 m²

PORCH: 8 m²

TOTAL: 460 m² - 50 SQ

WIDTH: 13.7 m **LENGTH:** 20.8 m

**MINIMUM
LAND SIZE**

ACT:

WIDTH: N/A **LENGTH:** N/A

NSW:

WIDTH: 16m **LENGTH:** 28m

VIC:

WIDTH: 16m **LENGTH:** 32m

**VIEW THIS
DESIGN ONLINE**

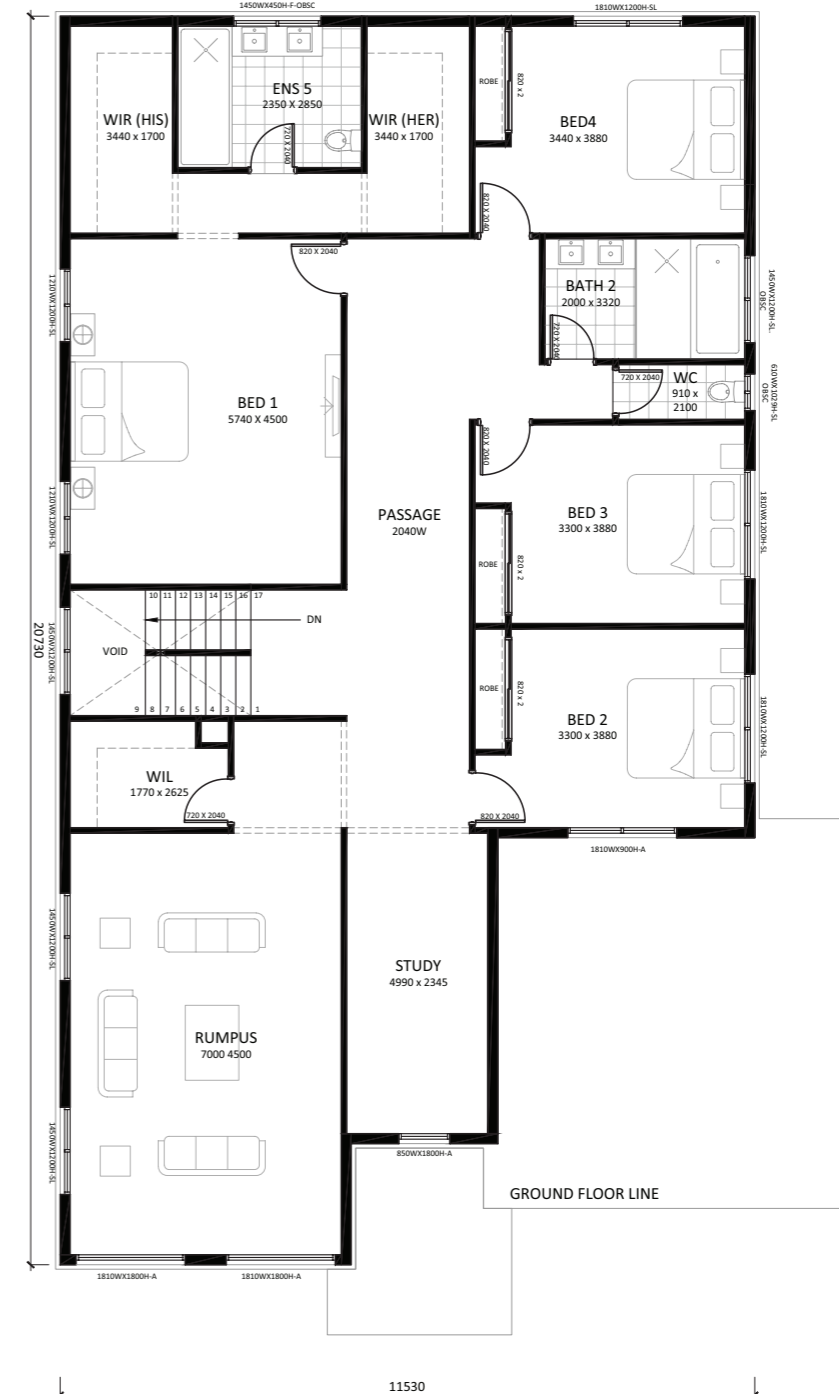


SCAN ME

LOWER FLOOR PLAN



UPPER FLOOR PLAN



Disclaimer: Design dimensions on this marketing plan are for marketing purposes. Dimensions are indicative, approximate and subject to change once confirmed by Achieve Homes Design team.