



\$616,640

HOUSE+LAND

ACHIEVE HOMES

REAL HOMES FOR REAL PEOPLE.

4448 Merrifield Estate, Mickleham. Muscat



Block Size
350m²

DESIGN Dimensions

Living: 165.5m²

Garage: 36.3m²

Alferesco: 0m²

Porch: 2.8m²

TOTAL HOME: 204.6 (m²)

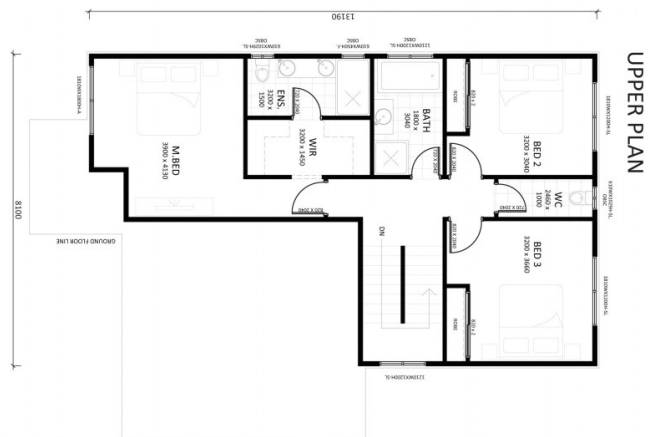
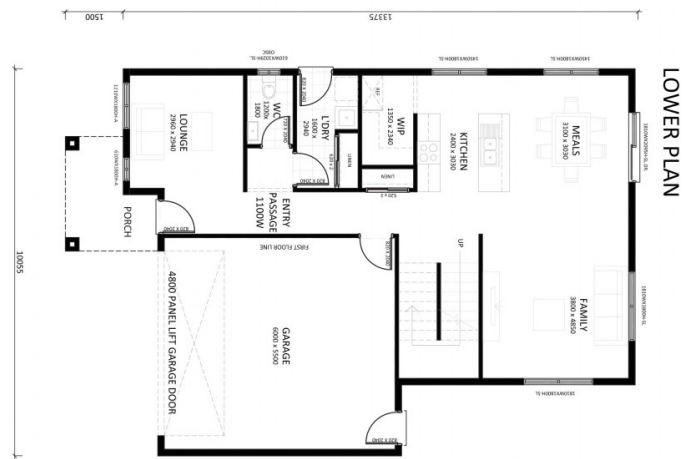
22.02 SQM

House Width: 10.2m

House Length: 13.45m

Key Features:

- ✔ 2 Living Areas
- ✔ Site Cut/Excavation
- ✔ Colorbond Roof
- ✔ Fixed Site Costs
- ✔ 20mm Stone Benchtop in Kitchen
- ✔ 900mm Cooktop, Oven & Rangehood
- ✔ Coloured Concrete Driveway



VIEW HOUSE & LAND PACKAGES ONLINE



Zaid Jubran
Mobile: 0427 050 415

Muscat 22

ENQUIRE NOW 1300 234 432 | sales.vic@achievehomes.com.au | achievehomes.com.au

Achieve Homes reserves the right to alter any price without notice. Subject to developer design approval. Conditions apply. These images are for illustrative purposes only and may depict upgrade options available from Achieve Homes at additional charges such as lighting, window furnishings, landscaping, driveway, paving and timber windows. The price also excludes features not supplied by Achieve Homes such as gardens, fencing and decking. Any alterations and upgrades may incur additional costs. The price does not include stamp duty, legal fees or other costs incurred with the purchase of the land. Please consult a Achieve Homes sales representative for further information and detailed pricing. All designs are the property of Achieve Homes and must not be used, reproduced, copied or varied, wholly or in part without written permission from an authorised Achieve Homes representative. Copyright. Achieve Property Group Pty Ltd.

ACT.ACT.BL No 2009645/NSW.BL No 224797C/ VIC.ABN 41 608 214 375VIC.BL No CDB-U 61982