



ACHIEVE HOMES

REAL HOMES FOR REAL PEOPLE.

Geneva - 23



4



2



2

4 BEDROOM
SINGLE STOREY

DESIGN DIMENSIONS

LIVING: 162 m²

GARAGE: 36 m²

ALFRESCO: 7.2 m²

PORCH: 4 m²

TOTAL: 209.2 m² - 22.52 SQ

WIDTH: 11.3 LENGTH: 20

MINIMUM LAND SIZE

ACT:

WIDTH: N/A LENGTH: N/A

NSW:

WIDTH: 12.5m LENGTH: 30m

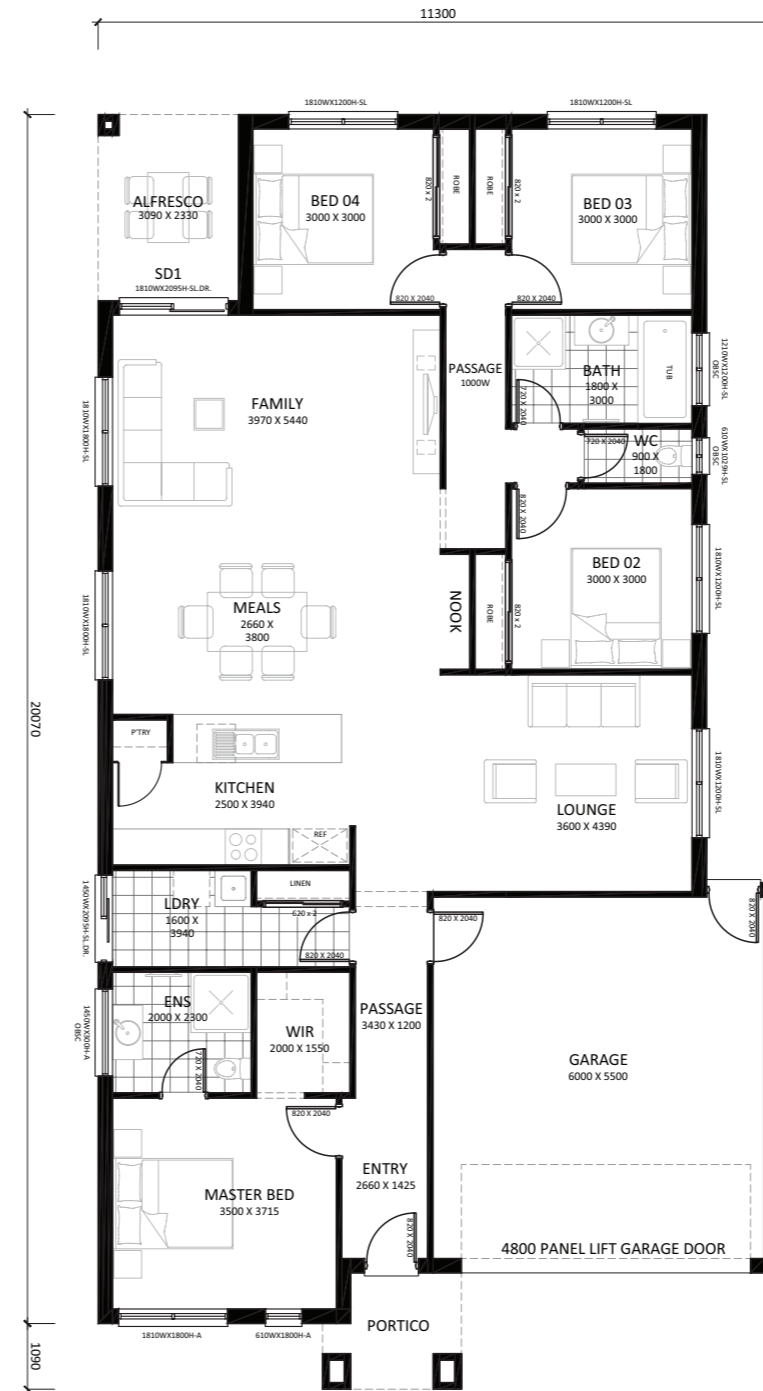
VIC:

WIDTH: 12.5m LENGTH: 28m

VIEW THIS
DESIGN ONLINE



SCAN ME



Disclaimer: Design dimensions on this marketing plan are for marketing purposes. Dimensions are indicative, approximate and subject to change once confirmed by Achieve Homes Design team.