



ACHIEVE HOMES

REAL HOMES FOR REAL PEOPLE.



4



2



2

Nablus - 24

4 BEDROOM
SINGLE STOREY

DESIGN DIMENSIONS

LIVING: 165 m²

GARAGE: 37 m²

ALFRESCO: 21 m²

PORCH: 6 m²

TOTAL: 230 m² - 24 SQ

WIDTH: 14.06m LENGTH: 21.45m

MINIMUM LAND SIZE

ACT:

WIDTH: 15.8m LENGTH: 27.4m

NSW:

WIDTH: 16m LENGTH: 30m

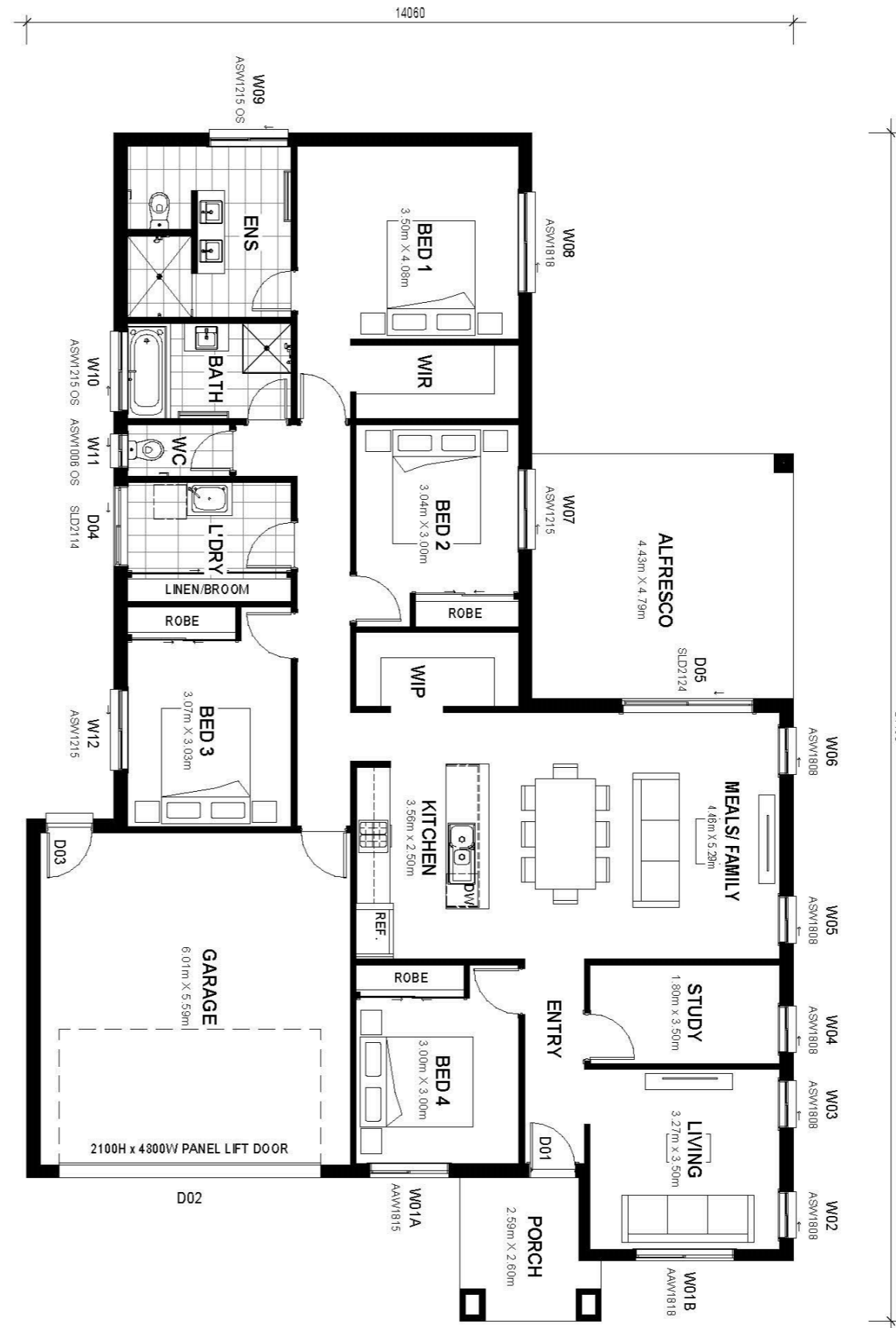
VIC:

WIDTH: 15m LENGTH: 28m

VIEW THIS
DESIGN ONLINE



SCAN ME



Disclaimer: Design dimensions on this marketing plan are for marketing purposes. Dimensions are indicative, approximate and subject to change once confirmed by Achieve Homes Design team.